



Parent/Carer Handbook 2025-2026

Our School Vision

At High Halden we take pride in creating a nurturing environment where our community of learners are valued as individuals. Through God's love, rich experiences and a sense of belonging, all will make strong roots to grow, flourish and bear fruit.

I am the vine; you are the branches. If you remain in me and I in you, you will bear much fruit. (John 15:5)



Rooted in God, We Grow Together.



Generosity

Respect



Wisdom

Trust

Hope



We are very proud of our school, our pupils and their successes. As a church school, the Christian faith underpins all that we do in school. We strive to ensure that pupils at High Halden are happy and confident individuals who demonstrate the school's core Christian values of generosity, respect, love, wisdom, trust and hope.

We aim to provide your child with the experiences, knowledge and academic skills to inspire them to become successful life-long learners. We want our children to live life in all its fullness, growing together to enable them to flourish.

We actively encourage parents to become involved in their children's education. Our school is well-resourced with talented and committed staff. Working together as a school family, we can ensure that children are both happy and successful at school.

We are hoping that this guide will provide new and established families alike with some of the key information regarding the workings of the School. The information it contains is as up-to-date as possible and reviewed frequently. If you have any suggestions for this guide, please do not hesitate to let us know.

Absences

In case of unplanned absences, please notify the school of the reason by 9:00 am on the first day or as soon as practically possible by contacting the school office. This helps us ensure the safety and well-being of all children.

Reporting



Absences

Breakfast Club

Our Breakfast Club opens at 8:00 am, with food served until 8:15 am. We encourage children to arrive before this time if they wish to have breakfast. Breakfast club spaces must be booked in advance via the school office.



Drop-off and Pick-up Times

The morning gate opens at 8:30 am and closes at 8:40 am, with registration and lessons promptly starting at 8:40 am.

Please ensure timely drop-off and collection (3:15pm) of your child to avoid disruptions to lessons and staff schedules.



Jewellery/Accessories

To ensure the safety of all children, we do not allow jewellery except for earring studs in pierced ears. Children must remove any items during PE lessons to prevent injury. Hair bands, ribbons, or scrunchies should be plain without large decorations.



Generosity Respect



Wisdom Trust Hope

Labeling Belongings

Can we please ask that you label all items of clothing clearly to prevent confusion and aid in reuniting lost items with their owners.

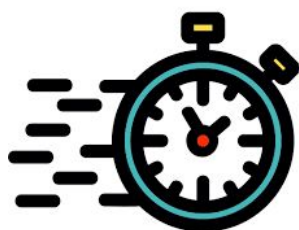


Medication

Any medication, including creams, tablets, or lozenges, must be handed over to the school office for safekeeping. Children must not keep these in their bags. Please note that staff can only administer prescribed medication.

Packed Lunches

Please pack healthy lunches without nuts, sweets, or fizzy drinks, as we have students with allergies. Kindly check all foods for nuts before sending them in your child's lunchbox.



Prompt Responses to Google Forms/Letters

To streamline communication, we request prompt responses to any online forms or letters shared by the school office to avoid unnecessary follow-ups.

School Bags

We kindly ask that children **do not** bring rucksacks or bags into school. Please use **bookbags** to maximise safety and space in our corridors. You do not need to purchase logo book bags, you can choose any design of your choice.



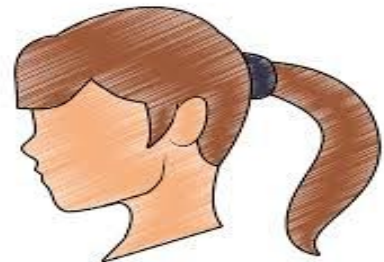
Shoes

For health and safety reasons, children are required to wear plain black shoes without logos, and boots should also be plain black. Please note that trainers are not considered appropriate school footwear.



Tying Hair Back

If your child's hair is shoulder length or longer, please ensure it is tied up.



Uniform

Please remember that our school uniform consists of bottle green jumpers, white polo shirts, and grey trousers, shorts, or skirts. We aim to keep the cost of uniform to a minimum, allowing you the flexibility to purchase logo items from County Print or non-logo items from a supermarket or shop of your choice. Cycling shorts and leggings are **not** permitted as part of the school uniform but may be used for PE clothing.



Water Bottles

Please could you provide your child with a reusable lightweight plastic (not metal) and clearly named water bottle. Bottles should also not be too large, ideally no more than a 500ml capacity, to enable use at our water filling stations.



Website



Our school website has a host of information for you, including curriculum plans, SEND information, policies and useful links for parent

Class Dojo



A polite request that you try to avoid sending staff messages via Dojo in the evenings/weekends. The staff work incredibly hard during school hours and should be focusing on their own families during these times.

Contact Us



01233 850285



www.high-halden.kent.sch.uk



office@high-halden.kent.sch.uk



Generosity

Respect



Wisdom

Trust

Hope